



Ysgol Comins Coch  
Autumn 2016

Ysgol Comins Coch



**Annual Governors' Report to Parents**

**2015-16**

## A message from the Chair of Governors Autumn 2016

Dear Parents and Carers,

I am very pleased to provide you with a summary of the school's many achievements over the past year.

The academic achievement of our children continues to be among the best in Wales. The tables at the end of this report show that our children achieve excellent standards in all areas of their work. We are very proud to hear that they settle in well at Penglais and Penweddig and continue to thrive and achieve in all areas of their learning.

Our children are involved in a wide range of musical, sporting, literary and art activities and many have been successful at local, county and national level. We congratulate them all on their successes. There has been excellent involvement with the Eco-Schools, Healthy Schools, Fairtrade and Cymraeg Campus projects, class trips, residential school trips to Llangrannog, Glanllyn and Cardiff, as well as many fund raising activities by the children throughout the year. These and many other opportunities help ensure that our children gain rich and exciting experiences that prepare them for the future.

We asked for your views about the school earlier in the year and many of you said you were very happy with the environment, the leadership and the staff at the school but that you wanted more communication about what your children were learning and how you could support the school. That feedback was very useful and informs our plans for the coming year. The school now provides you with a summary of learning topics at the beginning of each term, will move towards using more digital communication and social media, and has already held a number of events for parents and carers. The PTA already performs an invaluable job throughout the year, as well as raising funds which are invested directly in the school, nearly £3,000 this year! We are very grateful for their hard work and support of the school. They have a new and enthusiastic Committee, and I would like to welcome all new members. I would also like to thank Wendy Turner who recently retired from the PTA after many years' involvement.

We continue in our efforts to improve the fabric, appearance and safety of the building to make the school a more attractive place for our young people and accessible to those who have disabilities. We face significant challenges as pupil numbers continue to grow and particularly in relation to toilets and other facilities. We are currently discussing these issues with the County Council and others. We thank the PTA for their support towards the cost of the new wall at the front of the school, which was built using stone from the old school and has a historic significance. Thank you also to those parents who recently helped to tidy up the grounds of the school.

The school's finances remain challenging but are carefully managed. [These constraints, and changing pupil numbers, mean we may have to allocate pupils between different classes. We do this very carefully and sensitively, and I believe we achieve exceptional results within the resources available to us. Pupil attendance was 95.5% during the last school year, which is lower than the target set by the Governors, and lower than in previous years. Improving attendance is and will be a priority for the school and we ask for your co-operation and support in helping us to do so.

We welcome Mrs Ruth Morgan who has joined us as teacher of one of the year 2 classes for 2016-17 and hope she will enjoy being part of our school and the community. I want to record our thanks to Mrs Catherine Smith, Mrs Elen Roberts and Miss Sara Parry, who left during the year and to wish them both well for the future.

The outstanding results which you can see in this report would not have been achieved without the hard work and dedication of all the teachers and teaching support staff at the school. I would particularly like to recognise and thank Mrs Bethan Davies, Acting Headteacher, for her excellent leadership in a new role. I also thank the members of the governing body for their hard work and support throughout the year.

Finally, I thank you for your support the school is incredibly lucky to have such a dedicated and talented teaching staff, enthusiastic parents and carers, and supportive governors. Together we can look forward to another exciting and successful year.

I am always happy to meet with parents or carers to discuss the contents of this report, or any other matter which you think should be brought to my attention. Please contact the school if you wish to do so.

Yours sincerely,

*Richard Feasey*

Chair of Governors

# The Governors' Annual Report to Parents

## Current List of School Governors and their terms of office.

Chairman of Governors: Mr Richard Feasey (Contacted via the school.)

Clerk to the Governors: Director of Education, Cyngor Sir Ceredigion, Canolfan Rheidol, Rhodfa Padarn, Llanbadarn Fawr, Aberystwyth. SY23 3UE

During 2015/16 academic year the full Governing Body have met on three occasions to receive written and verbal reports from the Headteacher and the Local Education Authority. These reports aim to cover the school's development plan, the day to day and running of the school by the Headteacher and the L.A. They consist of the number of pupils; staff and class sizes; courses that staff attend; the amount of money the school has to spend and how it is spent; any developments in the curriculum, national or local; any problems with buildings etc.

<b>Members of Governing Body.</b>				
1	Mr Richard Feasey	Parent Governor	16/01/17	
2	Dr Myra Wilson	Parent Governor	23/10/16	
3	Dr Jamie Medhurst	Parent Governor	22/02/20	
4	Ms Elen Jones	Parent Governor	06/06/20	
5	Mrs Sarah Payne	Teacher Governor	01/02/20	
6	Mrs Alison Mason	Staff Governor	11/12/18	
7	Cllr JE Roberts	LEA Governor	04/05/17	
8	Cllr Alan Evans	LEA Governor	03/02/19	
9	Vacancy	LEA Governor		
10	Mr Anthony Evans	Community Governor	09/07/17	
11	Mrs Sue Ginley	Community Governor	24/01/20	
12	Mrs Elaine Thomas	Community Governor	11/09/18	
13	Vacancy	Community Governor	16/07/16	
14	Mrs Beth Davies	Headteacher		

## Governing Body – Election of new Governors

The next elections for the posts of parent governor will be due in the autumn of 2016 and January 2017. One post of Local Authority Governor and one of Community Governor are vacant posts. Dates of the next meetings of Governors are 28/11/16 & 13/3/16.

## Monitoring.

A detailed Headteacher's Report is produced for each full Governing Body meeting. This outlines school performance, key areas for development and highlights issues to be discussed. Progress of the School Development Plan is discussed at each meeting.

## Appointments and Personnel Matters

We have a dedicated team of teachers and support staff whose contracts of employment can vary throughout the year, depending on the individual needs of identified children with special educational needs. Some of these assistants are funded by the L.A. Additional Learning Needs department and some by our main school budget.

Staff changes during the year 2015-16:

As explained previously, Mr Tom Fanning Headteacher has undertaken a secondment of 5 terms to ERW the Education Consortia. Mrs Bethan Davies has agreed to take on the role of Acting Headteacher in his absence. We are pleased to have appointed Mrs Sarah Payne as Assistant Headteacher to replace Mrs Anwen Lloyd Hughes and as teacher in year 4/5 class whilst Mrs. Davies is acting Headteacher. We are grateful to Mrs Ceri Callow who took on the role of Acting Assistant Headteacher to cover the period of Mr. Fanning's secondment.

We are also grateful to Mrs Catherine Smith for her work as temporary teacher of year 4 during the academic year 2015-16, and wish her well for the future. Thanks also to Mrs Jacqui Ireland (Lunchtime Supervisor) who left her post during the year. Mrs Emma Morgan (Breakfast Club and Lunchtime Supervisor) who is currently on maternity leave and we congratulate her on the birth of her daughter, Mari.

During the year, we welcomed Mrs Cerys Gower-Jenkins, Miss Sara Parry and Miss Sioned Jones as Teaching Assistants and Mrs Sylvia Cummings (Breakfast Club) and are grateful to them for their support during the year.

As part of the national programme of remodelling the workforce in schools, teachers are entitled to time during the school day for planning, preparation and assessment of children's learning. This is known nationally as PPA time. This school complies fully with the requirements of the National Remodelling Agenda.

A full list of staff of the school in September 2016 appears below.

### **Staff at Comins Coch School.** **2016 – 2017**

Beth	Davies	Headteacher	Hawys	Hughes	Teaching Assistant FP
Sarah	Payne	Assistant Headteacher	Sara	Jones	Teaching Assistant FP
Ceri	Callow	Assistant Headteacher (0.5)	Mandy	Daniel	Teaching Assistant FP
Caryl	Davies	Teacher	Sian	Jones	Teaching Assistant FP
Glesni	Roberts	Teacher (0.5)	Sioned	Jones	Teaching Assistant FP
Ruth	Morgan	Teacher	Helen	Williams	Teaching Assistant
Siwan	Davies	Teacher	Angharad	Evans	Teaching Assistant
Rachel	Roberts	Teacher	Cerys	Gower -Jenkins	Teaching Assistant
Lee	Gower	Teacher			
Elaine	Thomas	HLTA	Sue	Hopkins	School Cook
Adam	Lewis	HLTA	Janet	Lea	Catering Assistant
Ellyw	Jenkins	Admin Support	Emma	Morgan	Breakfast Club & Lunchtime Supervisor
Rachel	Gregory	Violin.(Tuesday)	Jacqui	Ireland	Breakfast Club
Aidan	Hassan	Brass. (Monday)	Sheila	Jones	Catering Assistant / Breakfast Club
Alison	Greeley	Woodwind (Wednesday)	Sylvia	Cummings	Breakfast Club
			Stephanie	Smith	MTA
Sian	Titley	Cleaner / Caretaker	Rachael	Smith	MTA

#### **L.M.S. School Budget**

The budget figure of 2015/16 financial year inclusive of additional grants and income was **£548,103**

This covered teachers' salaries, learning support staff salaries, capitation (books and equipment etc.), premises costs, heating, lighting, repairs, rates etc., grounds maintenance, cleaning, maintenance and other fixed contracts.

#### **Statement of Expenditure**

In accordance with the requirements of the Educational Format 1988, the statement of actual gross expenditure for the year ended 31st March 2015 was **£ 559,777** and is outlined in Appendix 1 of this report.

#### **Governors Travelling & Subsistence Expenses**

The school governors did not make any claims for the above.

## **School Gifts**

The school is very fortunate to have an active Parent Teacher Association supported by the parents. Funds raised have supported a number of school identified priorities. Detailed accounts are made available at the Annual General Meeting of the Parent Teacher Association.

## **Progress on School Action Plan (post-inspection)**

Following the successful inspection in October 2011, the following recommendations were made:

- Further develop the role of support staff, developing their skills and expertise
- Further develop the implementation of assessment for learning strategies across the school

Action to address these recommendations has been incorporated into the School Development Plan. Review of progress is regularly reported to governors through monitoring.

The Main priorities for the School Development Plan 2015-16 were:-

- Maintain and further improve excellent standards in Welsh. \*
- Further develop and embed assessment and moderation procedures to ensure processes and practices deliver effective moderated secure levels.
- Support and develop the new Senior Management Team of the school.
- Continue to develop practice of peer observation and 'Buddy system' as part of mentoring and monitoring practices in the school.

The Main priorities for the School Development Plan 2016-17 are:-

- Improve ICT skills and their development across the curriculum.
- Maintain excellent standards in Welsh and aim to achieve silver award in Siarter Iaith.
- Review the impact and effect of whole school accreditation schemes - Healthy Schools, Eco Schools, Fairtrade Award.
- Embed and develop practices of new staff with appropriate support and training.

## **The School Curriculum**

Children are taught in mixed classes according to their age, ability and social groupings. Stress is placed on acquiring the basic skills of Speaking and Listening, Reading and Writing, Mathematics and Science. In addition to these subjects, the school offers a wide curriculum according to the requirements of the National Curriculum, National Skills Framework, Digital Literacy framework and the Foundation Phase Curriculum.

### **Foundation Phase (3-7 year old)**

At this stage the main building blocks of learning experiences are laid. The emphasis will be on developing essential skills of communication, literacy, numeracy and ICT. We believe that by providing a broad, rich curriculum, we aim to develop the children's interests whilst also recognizing their level of maturity. These are important years for your child where they learn to observe, listen, respond and develop not only as individuals but also as caring members of the school community.

### **Key Stage 2 ~ 7-11 year old**

The essential skills of communication, literacy, numeracy and ICT will still be the central focus of our curriculum. But, as their understanding of the different disciplines increases, more time will be given to science and the foundation subjects. We believe that by continuing to focus on developing children's skills they develop self-confidence and independence in their learning.

### **Groups of children.**

The school considers the performance of all groups of children and ensures that every child makes progress appropriate to the best of their ability.

## **Targets**

All children are set individual targets for achievement. In addition to these Year 4 and 5 targets are set for achievement by the end of Yr.6, Year 1 targets are set for achievement by the end of Yr.2. Baseline Assessments are recorded in the reception class and the school and county's assessment procedures in all other age groups.

A summary of targets for attainment for the school form an appendix at the end of this report.

## **Special Educational Needs / Additional Learning Needs**

The named governor with responsibility for SEN is Ms Sue Ginley

Additional Learning Needs and Special Educational Needs are supported by a team of Teaching Assistants. The TAs are employed to support teachers and children in the delivery of the curriculum to children with additional learning needs, including children with special educational needs.

The Local Education Authority is consulted regularly with regard to provision available and for funding to provide the framework for special needs.

## **In-Service Training and Professional Development.**

In-service training arrangements for teaching and support staff have been outlined in detail in termly Headteacher's reports to governors.

## **Sites and Buildings**

Governors were kept informed of any problems and difficulties in the school buildings and grounds and were told of any remedial work to be undertaken. The governors have made changes to the school building improving security at the main entrance, fencing in school grounds and with the LA improving the school car park.

## **Toilet facilities.**

The school has toilet facilities for Dosbarth Derbyn, boys and girls toilets for Foundation Phase and boys and girls toilets for Key Stage 2. The school toilet facilities are cleaned daily by the cleaner and are checked regularly by staff who will ensure that they are maintained throughout the day. Maintenance of the toilet areas is always a priority of the school's maintenance programme with all toilet areas having new ventilation systems installed during 2014-15. Further improvement to the toilet facilities due to increasing pupil numbers is a priority.

## **Health and Safety**

This remains a priority with the Governing Body and is constantly being reported on with Cllr John Roberts as the named Governor responsible for this role. The school and Cllr Roberts welcome all suggestions to improve safety at school.

Regular fire drills and an annual Health and Safety audit are undertaken in the school.

## **Discipline & Behaviour**

The school maintains a high level of discipline and will not tolerate disruptive behaviour or bullying. Expectations of the behaviour policy are provided with the School Prospectus to parents when their child/children enter the school. All incidents of bullying are reported to the Governing body of the school.

## **Uniform.**

Our intention is that pupils who attend Ysgol Comins Coch will be proud to belong to the school and will wish to be identified with us by wearing our distinctive school uniform. It is very practical for all activities undertaken in and out of school and establishes a very healthy sense of unity and

teamwork. The cooperation of parents in ensuring a full and correct maintenance of the uniform is requested. Children are discouraged from wearing jewellery other than stud earrings and watches.

### **Arrangements for Disabled Pupils & Access for Children & Adults with Restricted Mobility**

All pupils irrespective of disability are treated equally and the school does not allow any form of discrimination. Pupils with disabilities can be admitted to the school and integrated into mainstream classes with the support of various LA agencies and personnel. The school monitors all children carefully and due consideration is given to pupils' disabilities. The school has both a policy to increase access for disabled pupils and an accessibility plan to ensure improved accessibility for disabled pupils. The school has level access to the main teaching areas of the school and level access is available to the school site through the main gate. Ramped access to the main school hall is currently from the rear of the building. A priority of the plan will be to install a disabled toilet.

### **Child Protection and Safeguarding.**

The health, safety and wellbeing of all our children is of paramount importance. To this end the school works in partnership with other bodies to ensure that our children are cared for by staff who are trained and vigilant in school and authority child protection and safeguarding procedures. The Assistant Headteacher, Mrs Sarah Payne is the school's Child Protection Officer.

### **Community Links**

The school prides itself in fostering links within the community such as charities, industry, commerce, local churches, police and other agencies. Work experience and Training College Partnerships continue to flourish with Aberystwyth and Bangor Universities, Coleg Ceredigion and Bronglais Hospital and Comins Coch Community Association.

The caring, sharing ethos of the school is extended through our support of at least one national, one international and one local charity each year. Over the last academic year fundraising events were held for Bobath Cymru, The Down's Syndrome Association, Jubilee Storehouse (Food Bank) Aberystwyth, Mercy Corps, Save the Children.

The school has excellent links with Penglais and Penweddig Schools. The school works closely through the local Transition Plan to ensure a smooth transfer to secondary school.

### **The Parent Teacher Association.**

The school has a very active PTA which regularly organises fund-raising and social activities. During the past year the association has raised over £2000 through activities such as fetes and raffles. They funded the walled seating area for the children which has further enhanced learning and playtime experiences for pupils. Through questionnaires we ask for your views of the school. We use this information to make Ysgol Comins Coch an even better school for your child.

### **The Welsh Language**

Ysgol Comins Coch is a predominantly English Medium primary school but with significant use of Welsh. All children at Ysgol Comins Coch undertake learning activities to develop an understanding and use of the Welsh language. In line with the authority's policy it is our aim to enable each child to have a bilingual competence by the age of 11. We have been a pilot school for ERW (the education consortia) in its development of the Welsh Language Charter 'Cymraeg Campus' and aiming towards the Bronze Award. The school actively promotes children's use of Welsh as a natural language in the school. We aim to ensure that by the time children leave Ysgol Comins Coch they have a choice of either Welsh or English secondary education.

### **Sporting Achievements**

During this last year Comins Coch children have taken part in many extra-curricular sporting activities including football, rugby, cross country, athletics, cricket and cycling.

The swimming team competed in the Urdd and District Galas. Pupils also had opportunities to attend the multi skills sessions offered by Ceredigion Actif.



## School Prospectus

Although the school prospectus is reviewed annually, and meets guidance issued by National Assembly for Wales Circular 14/01, it will be updated significantly during this year. The Headteacher holds an informal meeting over coffee with the parents of children due to start school each term to explain the school prospectus and its contents. The prospectus is issued to parents with children beginning full time education in Reception, and to parents of children transferring to the school mid-term. Copies are available in the school office.

## School Organisation.

Since September 2013 the school has been organized into seven class groups. These groups are organized into age groups and where it is not possible to have single age classes, groups are organized by the teaching staff into groups based upon their professional opinion. Such matters as social groupings, pastoral care, ability and gender are all considered.

## Organisation and Policies

School policies are updated and reviewed regularly on a four-year cycle. Where appropriate, or as required by new legislation and statutory guidance they are updated more often. During the Year 2015-16 policies reviewed and adopted include;

*Admissions policy, Child Protection policy, Data Protection policy, Equality policy, Teachers Pay policy, Performance Management, Pupil Discipline (including anti-bullying) policy, Sex education policy, SEN policy, Staff Discipline, Conduct, Capability and Grievance procedures, Register of Business interests of Headteacher and Governors, School Toilet policy, Substance misuse policy, Safe handling policy, Confidentiality policy,*

## School Terms & Holiday Dates 2015/16

Every primary school is entitled to a maximum of five days in an academic year for staff preparation and training. During 15/16 the school was closed on: 1<sup>st</sup> September, 23<sup>rd</sup> October, 13<sup>th</sup> November 2015, and 11<sup>th</sup> April 2016.

## Advance notice of Holiday dates

# 2016 - 2017

### TERM DATES FOR PUPILS

Term	Begin	Half-term		End	Number of school days
		Begin	End		
Autumn 2016	Monday 5 Sept 2016	Monday 24 Oct 2016	Friday 28 Oct 2016	Friday 16 Dec 2016	70
Spring 2017	Tuesday 3 Jan 2017	Monday 20 Feb 2017	Friday 24 Feb 2017	Friday 7 April 2017	64
Summer 2017	Tuesday 25 April 2017	Monday 29 May 2017	Friday 2 June 2017	Friday 21 July 2017	58
Plus directed teachers' closure days Thurs 1 Sept 2016, Fri 2 Sept 2016 & Mon 24 Apr 2017					3
<b>TOTAL</b>					195

# 2017 - 2018

### TERM DATES FOR PUPILS

Term	Begin	Half-term		End	Number of school days
		Begin	End		
Autumn 2017	Tuesday 5 Sept 2017	Monday 30 Oct 2017	Friday 3 Nov 2017	Friday 22 Dec 2017	74
Spring 2018	Monday 8 Jan 2018	Monday 19 Feb 2018	Friday 23 Feb 2018	Thursday 29 March 2018	54
Summer 2018	Tuesday 17 April 2018	Monday 28 May 2018	Friday 1 June 2018	Tuesday 24 July 2018	65
Plus directed teachers' closure days Monday 4 Sept 2017 & Monday 16 Apr 2018					2
<b>TOTAL</b>					195

The school day starts at 9am and ends at 3.30pm for all children. Lunch is from 12 – 1pm.

### **School Attendance Report**

It is a priority of Central Government to improve school attendance. We have worked hard over the past year introducing a number of strategies to build on current good practice. This has included correspondence, reminders to parents and telephone calls to home. School Attendance for the last three terms is listed below.

	Autumn	Spring	Summer	<b>15/16</b>
<b>Authorised absence %</b>	2.6%	4.4%	3.9%	3.6%
<b>Unauthorised absence %</b>	1.0%	0.6%	1.2%	1.0%
<b>Total attendance %</b>	96.4%	95.1%	94.9%	95.5%

The governors set a target for improved attendance and reducing absences. In 2015-16 the target was 95.7%. The target set by the Governors for 2016-17 is 95.75% and in 2017-18 it is 95.8% which matches the LA targets.

The vast majority of children at Ysgol Comins Coch attend school on time, and we thank parents for their support. However, on occasion children are late and this causes disruption for the class interrupted for latecomers as much as it does for the child who is late. Please remember that all children should be in their classrooms at 8.55am for lessons to start promptly at 9am. Holidays during term time will not be authorised. Holidays are recorded as unauthorised absence and where appropriate penalty notices may be issued. Parents' cooperation in these matters is much appreciated.

### **Complaints Procedure – summary**

The school has a complaints procedure, a copy of which is available upon request and is available on our website. The following is a summary of the steps:

1. All complaints must be in writing to a member of staff.
2. The complaint is considered by the Headteacher.
3. The complainant may make a complaint to the Governing Body if they are unhappy with the outcome. The decision of the Governing Body is final.

### **Destination of School Leavers.**

The school has a high turnover of pupils both arriving at and leaving the school with families moving to and from Aberystwyth. Children who are of age transfer out to both Penglais and Penweddig Schools. At the end of 2015-2016, 22 children transferred out with all of them going to Ysgol Penglais. In addition 2 pupils left the Aberystwyth area and 1 pupil transferred to another local primary school.

The governors and headteacher would like to express their sincere thanks for the support and encouragement the staff, parents, PTA and members of the wider school community have given the school during the past successful year.

**Mr Richard Feasey, Chairman of Governors**

**October 2016**

Appendix 1. Financial Statement of account  
Appendix 2. End of Key Stage Performance.

## Appendix 3. Targets for next Three Years

Appendix 1. Financial Statement of account (1/3)

**Comins Coch**  
**2303**

£

<u>CYFLAWNIAD ARIANNOL 2015/16</u>	-	<u>FINANCIAL PERFORMANCE 2015/16</u>
Mae'r Awdurdod Addysg Lleol newydd gau'r cyrifon am y flwyddyn ariannol a ddaeth i ben ar 31 Mawrth 2016. Dangosir isod sut y daethpwyd at y cyllid a benodwyd i'r ysgol.		The Local Education Authority has recently finalised the closure of accounts for the year ended 31 March 2016. The total funding for the the school has been derived as set out below.
Dyranriad Cyllid Gwreiddiol yn ôl Fformiwla	549,415	Formula Funding Initial Allocation
Newid yn Niferoedd Disgyblion	0	Change in Pupil Numbers
AAA	(3,437)	SEN
Arwynebedd	0	Floor Area
Y Dreth Annomestig	(844)	National Non-Domestic Rates
Cau Ysgol	0	School closure
Addasiad Arall	0	Other Adjustment
Dyranriad y Gronfa wrth Gefn heb ei Defnyddio	2,968	Allocation of Unutilised Contingency
Dyranriad Cyllid Diwygiedig 2015/16 yn ôl Fformiwla	548,103	Revised 2015/16 Formula Funding Allocation
Gwariant Net	518,304	Net Expenditure
Amrywiant	29,799	Variance
Llog ar y Gweddillion	0	Interest on Balances
Gwarged / (Diffyg) - 1 Ebrill 2015	55,010	Surplus / (Deficit) - 1 April 2015
Gwarged / (Diffyg) - 31 Mawrth 2016	84,809	Surplus / (Deficit) - 31 March 2016

**Comins Coch****2303**

£

£

<b><u>Employee Costs</u></b>	-		<b><u>Costau Gweithwyr</u></b>
Teacher Costs	374,458		Costau Athrawon
Teaching Assistant Costs	59,255		Costau Cynorthwylwyr Dysgu
Caretaking Costs	1,164		Costau Gofalwyr
Administrative Officers	8,672		Swyddogion Gweinyddol
Supervisors Costs	11,317		Costau Goruchwylwyr
Supply Teacher Costs	16,220		Costau Athrawon Cyflewni
Other Employee Costs	793		Costau Gweithwyr Eraill
<b>TOTAL EMPLOYEE COSTS</b>		<b>471,879</b>	<b>CYF. COSTAU GWEITHWYR</b>
<b><u>Premises Costs</u></b>	-		<b><u>Costau'r Adeilad</u></b>
Repair and Maintenance	5,730		Cynnal a Chadw
Grounds Maintenance	3,103		Cynnal a Chadw'r Tir
Energy Costs	10,728		Costau Ynni
General Rates	5,664		Trethi
Water Charges	1,571		Costau Dŵr
Cleaning Supplies and Services	8,923		Nwyddau a Gwasanaethau Glanhau
<b>TOTAL PREMISES COSTS</b>		<b>35,718</b>	<b>CYF. COSTAU'R ADEILAD</b>
<b><u>Transport Costs</u></b>	-		<b><u>Costau Trafnidiaeth</u></b>
Direct Transport Costs	1,440		Costau Trafnidiaeth
Travelling Costs	3,686		Costau Teithio
<b>TOTAL TRANSPORT COSTS</b>		<b>5,126</b>	<b>CYF. COSTAU TRAFNIDIAETH</b>
<b><u>Supplies and Services</u></b>	-		Adnoddau Dysgu
Teaching Resources	7,558		Adnoddau TGCh
ICT Resources	11,428		Costau Arlwyo
Catering Costs	14,422		Cytundebau Lefel Gwasanaeth
Service Level Agreements	9,461		Costau Llungopïo
Photocopying Costs	2,321		Nwyddau a Gwasanaethau Eraill
Other Supplies and Services	1,865		<b>CYF. NWYDDAU A</b>
<b>TOTAL SUPPLIES AND SERVICES</b>		<b>47,054</b>	<b>GWASANAETH</b>
<b>GROSS EXPENDITURE</b>		<b>559,777</b>	<b>GWARIANT GROS</b>
<b><u>Less: INCOME</u></b>	-		<b><u>Wedi'i Leihau :INCWM</u></b>
Parental/PTA Income	-2,600		Cyfraniadau Rhieni/CRhA
Grants	-16,553		Grantiau
Other Income	-22,321		Incwm Arall
<b>TOTAL INCOME</b>		<b>-41,474</b>	<b>CYFANSWM YR INCWM</b>
<b>NET EXPENDITURE</b>		<b>518,304</b>	<b>GWARIANT NET</b>
<b><u>Funding Available</u></b>	-		<b><u>Cyllid ar Gael</u></b>
Formula Funding 2015/16	548,103		Cyllid yn ôl Fformiwla 2015/16
Balance b/f 1 April 2015	55,010		Gweddill c/d 1 Ebrill 2015
		<b>603,113</b>	
<b>NET VARIANCE</b>		<b>84,809</b>	<b>AMRYWIANT NET</b>
<b>INTEREST</b>		<b>0</b>	<b>LLOG</b>
<b>TOTAL 15/16 SURPLUS</b>		<b>84,809</b>	<b>CYFANSWM ARIAN WRTH</b>
			<b>GEFN 2015/16</b>

RHEOLAETH LEOL YSGOLION  
LOCAL MANAGEMENT OF  
SCHOOLS  
Monitro Cyllidol / Financial Monitoring  
2015/16

**Comins Coch**  
**2303**

**Cyllid yn ôl Fformiwlâu / Formula Funding**

	£
Cyllid yn ôl Fformiwlâu / Formula Funding	549,415
Newid yn Nifer y Disgyblion / Change for Pupil Numbers	0
Addysg Arbennig / Special Needs	-3,437
Arwynebedd / Floor Area	0
Y Dreth Annomestig / NNDR	-844
Cau Ysgol / Closed School	0
Eraill / Others	0
Cronfa wrth Gefn heb ei Defnyddio / Unutilised Contingency	2,968
 Dyraniad Cyllid Diwygiedig yn ôl Fformwla Revised Formula Funding Allocation	 548,103

**Cyflawniad Ariannol / Financial Performance**

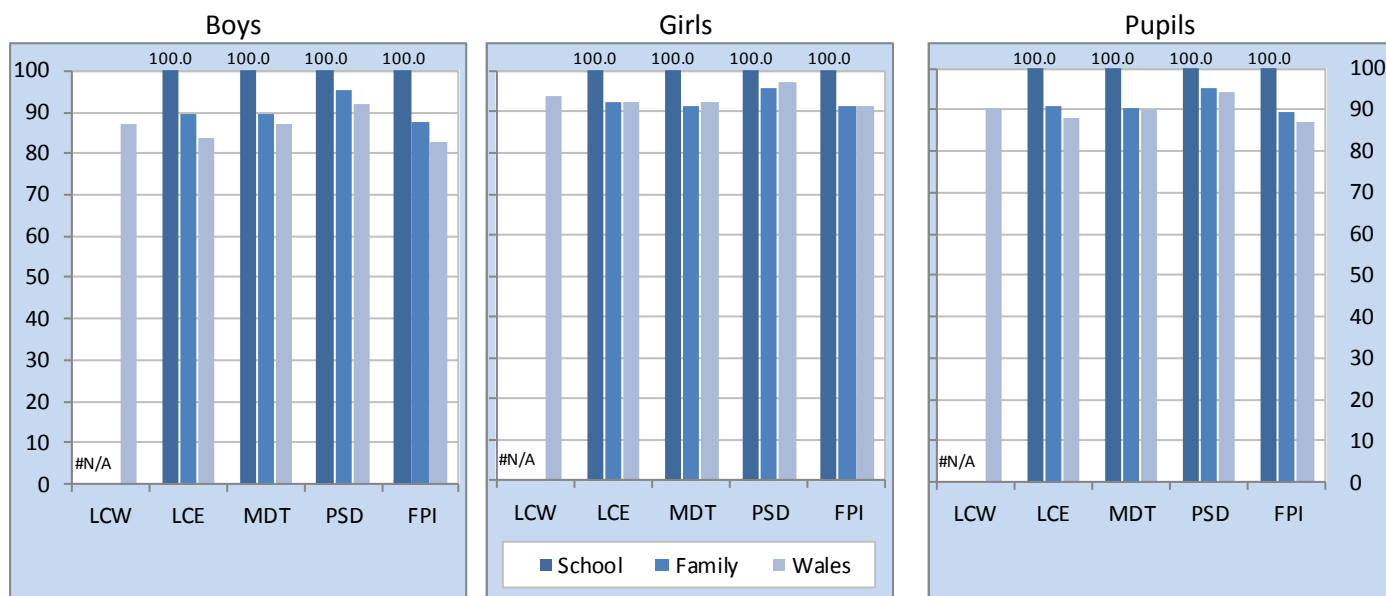
Gwariant Net/Net Expenditure		518,304
Amrywiant/Variance	2015/16	29,799
	Cyllid wrth gefn c/d 31/3/15	
	Reserves b/f 31/3/15	55,010
	Llog ar y Gweddillion 2015/16	
	Interest on Balances 2015/16	0
 CYFANSWM WRTH GEFN 31/3/16 *NET FUNDS AVAILABLE 31/3/16		 84,809

## How well does the school perform at Foundation Phase?

### 1. Latest school, family and Wales performance

Number of FP pupils		11/12	12/13	13/14	14/15	15/16
	Boys		15	11	12	8
Girls		6	8	18	10	9
Pupils		21	19	30	18	19

**Chart 3: Percentage of pupils achieving the expected outcome (Outcome 5+), by gender: 2015/16**



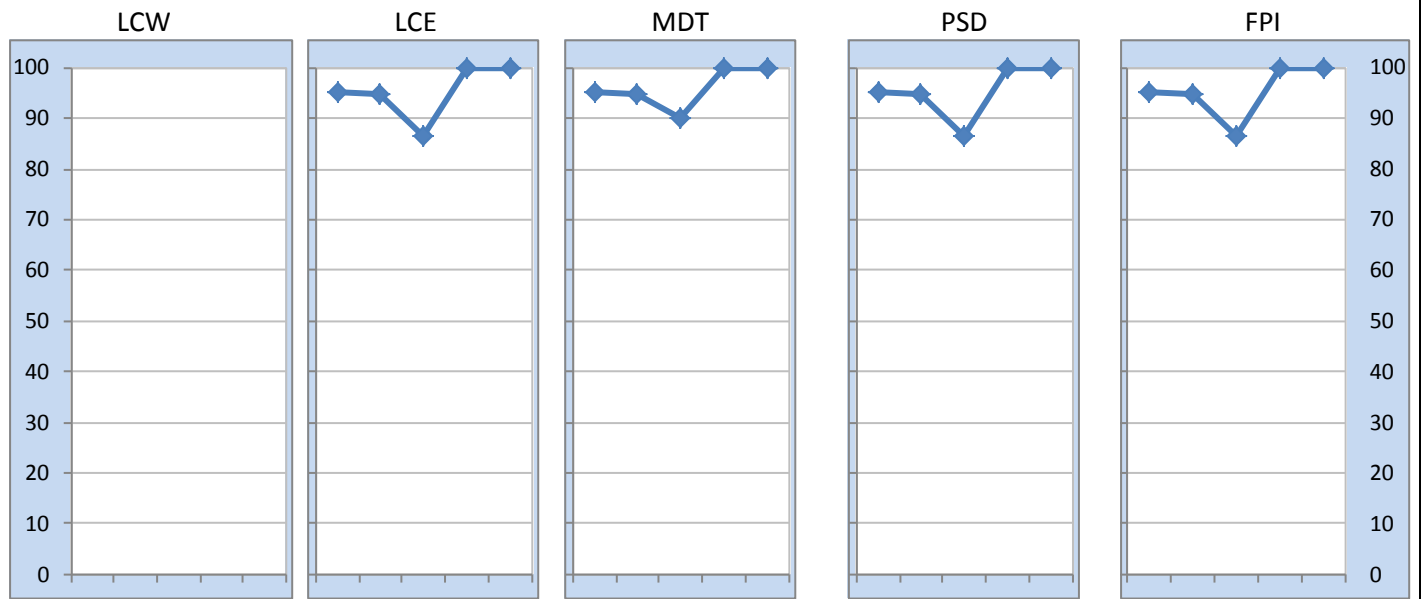
The Foundation Phase’s mandatory areas of learning (reporting-wise) are:

- Language, literacy and communication skills in Welsh (**LCW**) OR Language, literacy and communication skills in English (**LCE**)
- Mathematical development (**MDT**)
- Personal and social development, well-being and cultural diversity (**PSD**)

The Foundation Phase Indicator (**FPI**) is achieved by a pupil if Outcome 5 or greater is achieved in LCW/LCE, MDT and PSD in combination.

**2. School performance over time**

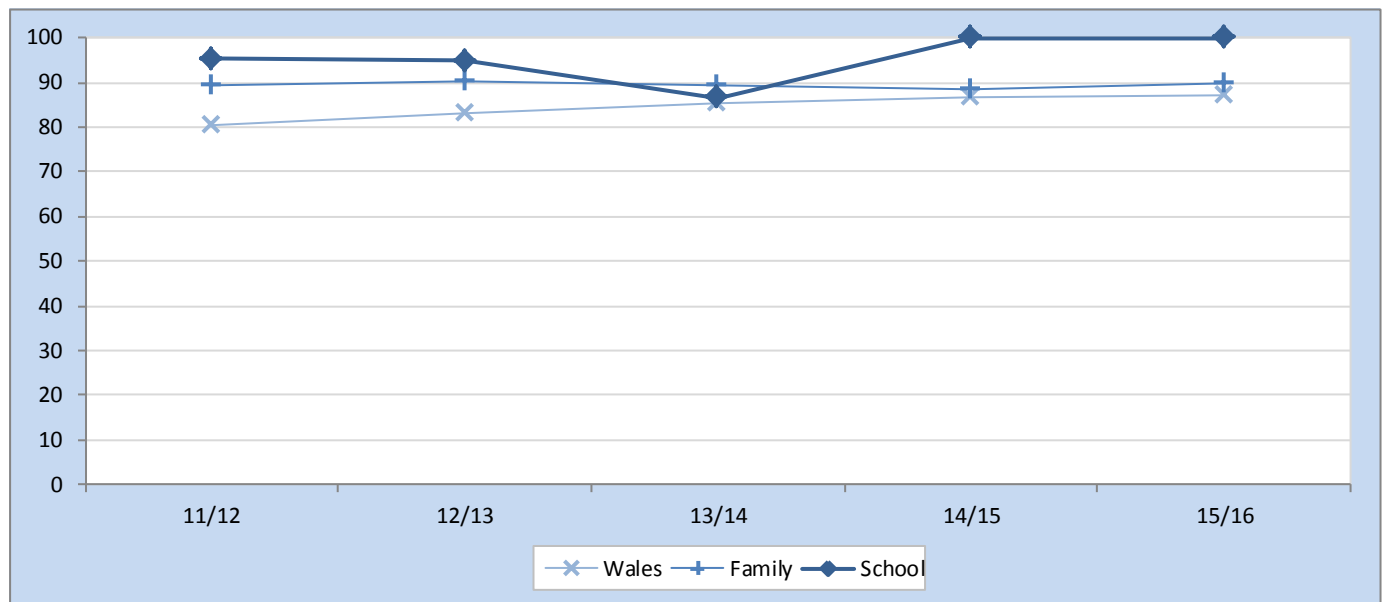
**Chart 4: Percentage of pupils achieving the expected outcome (Outcome 5+), by area of learning: 2011/12 - 2015/16**



**3. Areas of learning in combination**

**Foundation Phase Outcome (FPI)**

**Chart 5: Percentage of pupils achieving the FPI: 2011/12 - 2015/16**





## 5. Benchmarking

In Table 6 the school's data is shown, compared with similar schools with regard to FSM. The school's specific percentages are shown by the figures in colour and the boundaries that would be required to cross in order to move quarter are shown in the boxes.

**Table 6: Benchmarking the percentage achieving Outcome 5+ against school's FSM group: 2015/16**

	Quarter 4	Quarter 3	Quarter 2	Quarter 1
LCW	86.0	94.4	100.0	
LCE	90.9	96.4	100.0	100.0
MDT	90.9	96.4	100.0	100.0
PSD	97.5	100.0	100.0	100.0
FPI	87.5	93.5	100.0	100.0

In Table 7 the school's data is shown, compared with similar schools with regard to FSM for the last 5 years. The quarters are shown in colour.

**Table 7: Benchmarking the percentage achieving Outcome 5+ against school's FSM group: 2011/12 - 2015/16**

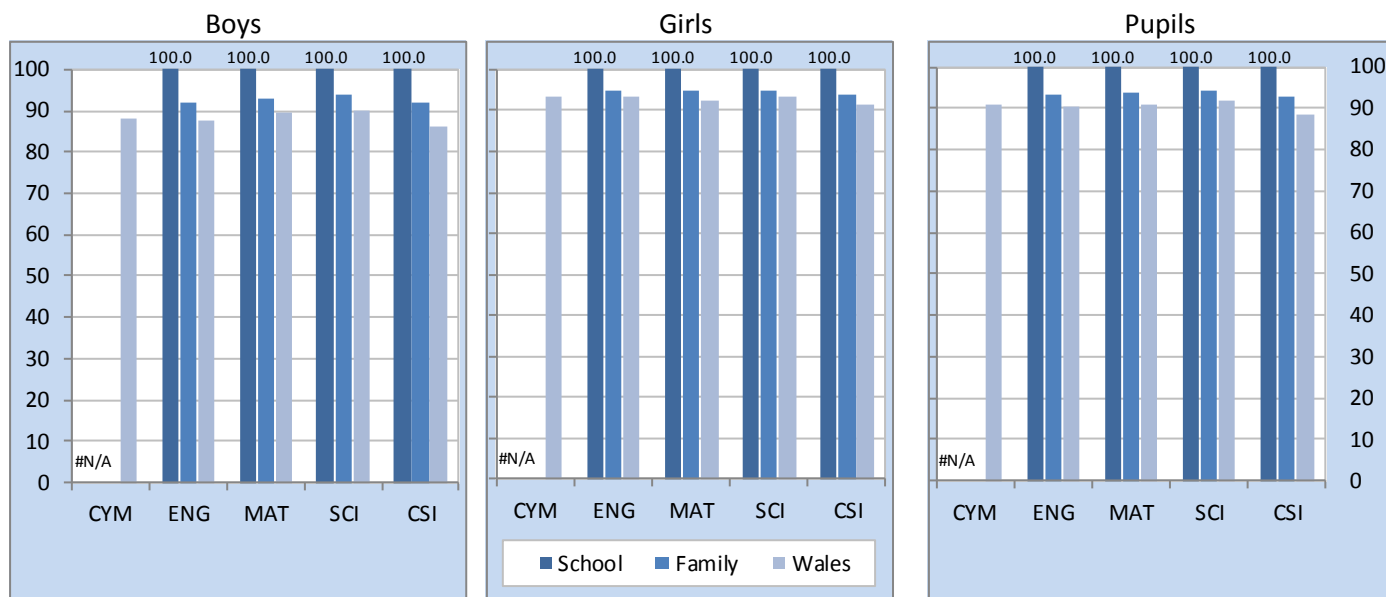
	One pupil as % (FPI)	LCW	LCE	MDT	PSD	FPI
2015/16	5.3	-	100.0	100.0	100.0	100.0
2014/15	5.6	-	100.0	100.0	100.0	100.0
2013/14	3.3	-	86.7	90.0	86.7	86.7
2012/13	5.3	-	94.7	94.7	94.7	94.7
2011/12	4.8	-	95.2	95.2	95.2	95.2

## How well does the school perform at KS2?

### 1. Latest school, family and Wales performance

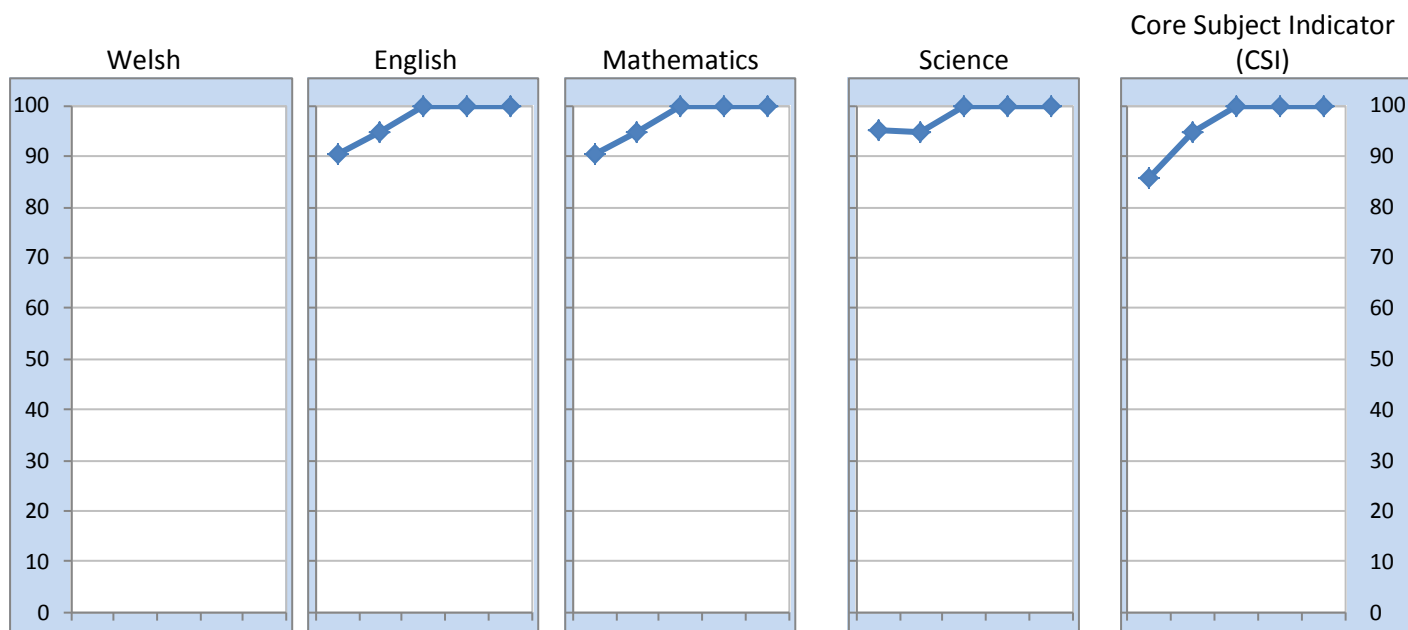
	11/12	12/13	13/14	14/15	15/16
<b>Number of KS2 pupils</b>					
Boys	6	11	13	12	14
Girls	15	8	13	13	8
Pupils	21	19	26	25	22

Chart 12: Percentage of pupils achieving the expected level (Level 4+), by gender: 2015/16



### 2. School performance over time

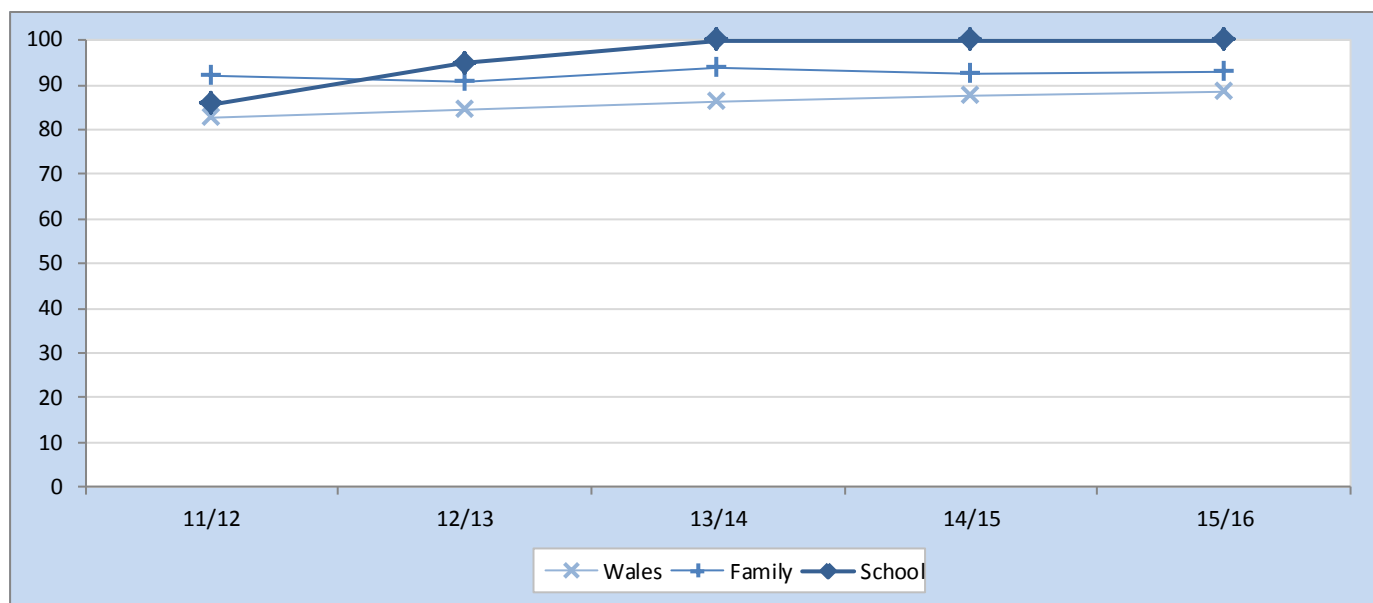
Chart 13: Percentage of pupils achieving the expected level (Level 4+), by subject: 2011/12 - 2015/16



**3. Subjects in combination**

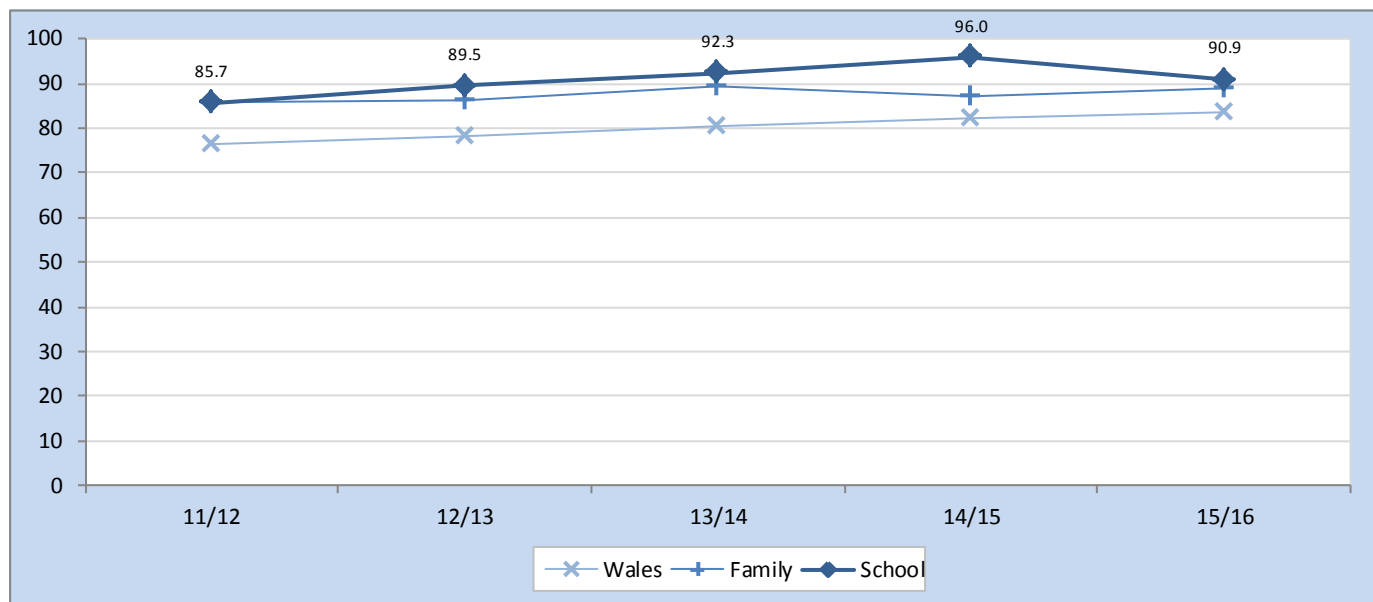
**Core Subject Indicator (CSI)**

**Chart 14: Percentage of pupils achieving the CSI: 2011/12 - 2015/16**



**Reading, Writing and Mathematics**

**Chart 15: Percentage of pupils achieving the expected level (Level 4+) in Reading, Writing and Mathematics in combination: 2011/12 - 2015/16**



## 5. Benchmarking

In Table 12 the school's data is shown, compared with similar schools with regard to FSM. The school's specific percentages are shown by the figures in colour and the boundaries that would be required to cross in order to move quarter are shown in the boxes.

**Table 12: Benchmarking the percentage achieving Level 4+ against school's FSM group: 2015/16**

	Quarter 4	Quarter 3	Quarter 2	Quarter 1
Welsh	87.5	96.7	100.0	
English	92.6	98.1	100.0	100.0
Mathematics	93.1	98.2	100.0	100.0
Science	95.0	100.0	100.0	100.0
CSI	90.9	96.4	100.0	100.0

In Table 13 the school's data is shown, compared with similar schools with regard to FSM for the last 5 years. The quarters are shown in colour.

**Table 13: Benchmarking the percentage achieving Level 4+ against school's FSM group: 2011/12 - 2015/16**

	One pupil as % (CSI)	Welsh	English	Mathematics	Science	CSI
2015/16	4.5	-	100.0	100.0	100.0	100.0
2014/15	4.0	-	100.0	100.0	100.0	100.0
2013/14	3.8	-	100.0	100.0	100.0	100.0
2012/13	5.3	-	94.7	94.7	94.7	94.7
2011/12	4.8	-	90.5	90.5	95.2	85.7

## Outcomes for Welsh Development 2016

### Foundation Phase – Blwyddyn 2

Ysgol / School	Cohort	O 1 %	O 2 %	O 3 %	O 4 %	O 5 %	O 6 %	O 5+ %
<b>Ceredigion %</b>	<b>147</b>	<b>1.3</b>	<b>0.0</b>	<b>2.0</b>	<b>29.2</b>	<b>50.3</b>	<b>17</b>	<b>67.3</b>
<b>Number of pupils</b>		<b>2</b>		<b>3</b>	<b>43</b>	<b>74</b>	<b>25</b>	<b>99</b>
<b>Comins Coch %</b>	<b>19</b>	<b>0.0</b>	<b>0.0</b>	<b>0.0</b>	<b>10.5</b>	<b>31.5</b>	<b>57.8</b>	<b>89.4</b>
<b>Number of pupils</b>					<b>2</b>	<b>6</b>	<b>11</b>	<b>17</b>

## Levels for Welsh Second Language

### Key Stage 2 – Blwyddyn 6

	Cohort	N %	D %	D1 %	D2 %	D3 %	L1 %	L2 %	L3 %	L4 %	L5 %	L6 %	L4+ %
<b>Ceredigion %</b>		<b>0.0</b>	<b>3.0</b>	<b>0.0</b>	<b>0.0</b>	<b>0.0</b>	<b>3.5</b>	<b>2.0</b>	<b>23.8</b>	<b>39.0</b>	<b>24.3</b>	<b>4.06</b>	<b>67.5</b>
<b>Number of pupils</b>	<b>197</b>	<b>0</b>	<b>6</b>	<b>0</b>	<b>0</b>	<b>0</b>	<b>7</b>	<b>4</b>	<b>47</b>	<b>77</b>	<b>48</b>	<b>8</b>	<b>133</b>
<b>Cymru</b>		<b>0.3</b>	<b>0.5</b>	<b>0.3</b>	<b>0.1</b>	<b>0.1</b>	<b>1.1</b>	<b>3.3</b>	<b>18.2</b>	<b>56.7</b>	<b>19.1</b>	<b>0.3</b>	<b>76.1</b>
<b>Comins Coch %</b>		<b>0.0</b>	<b>0.0</b>	<b>0.0</b>	<b>0.0</b>	<b>0.0</b>	<b>0.0</b>	<b>4.5</b>	<b>9.1</b>	<b>36.4</b>	<b>36.4</b>	<b>13.6</b>	<b>86.4</b>
<b>Number of pupils</b>	<b>22</b>	<b>0</b>	<b>0</b>	<b>0</b>	<b>0</b>	<b>0</b>	<b>0</b>	<b>1</b>	<b>2</b>	<b>8</b>	<b>8</b>	<b>3</b>	<b>19</b>

### Appendix. 3 . TARGETS FOR NEXT 2 Years

#### School Response to Ceredigion County Council's Learning Services Targets

Percentage of pupils achieving the Foundation Phase Indicator		2013/14 Performance T (A)	2014/15 Performance T (A)	2015/16 Performance T (A)	2016/17	2017/18
<b>Foundation Phase</b>	LA	87.9% (83%)	88.0%	88.5%	89.0%	
	School	83%	100%	100%	100%	100%
<b>K.S. 2</b>	LA	89.1% (86%)	89.2%	89.3%	89.4%	
	School	100%	100%	100%	95%	90%
<b>Attendance</b>	LA	95.5%	95.6%	95.7%	95.75%	
	School	95.5% (95.9%)	95.5 (95.6 %)	95.7 (95.5%)	95.75%	95.8%
<b>Local Targets</b>	1	90% of pupils to have a reading age above functional age at the end of Yr 7				
	2	Improved performance of pupils (English 70%; Mathematics 65%)				

## Priorities for School Improvement Plan 2016- 2017

### Areas for development to ensure improvement; noting \* against the areas to be included in the School Improvement Plan

- \* Maintain excellent standards achieved in learning.
- \* Maintain excellent standards in Cymraeg ail iaith – achieve silver award.
- \* Monitor attainment of boys/girls at the highest levels.

### Areas for development to ensure improvement; noting \* against areas to be included in the School Improvement Plan

- \* Continue to focus on improving attendance
- \* Continue to develop Clwb Comins to meet the needs of identified pupils.  
School and Eco Council – during the year provide guidance and training for year representatives to improve understanding of role and develop greater pupil responsibility through the delegation of roles such as secretary, chairperson etc. Improve communication and feedback to the school and parents via newsletters and website.
- \* Continue effective implementation of the new Baseline arrangements, tracking pupils through Foundation Phase.
- \* Continue to develop the practice of AFL across the school ensuring objectives and Success Criteria are emphatic in developing skills in order to maintain consistency following staff changes
- \* Review and improve ICT skills and their development across the curriculum.
- \* Continue to improve school communication and information services by **review of prospectus**, school website and use of social media.  
Work with LA to improve digital communication with parents.
- \* Continue to support pupils with low self-esteem and confidence through appropriate intervention and nurture groups.
- \* Ensure that whole school accreditation schemes are effectively planned for throughout the year and achieve status;  
*Eco Schools Assessment, Healthy Schools Award, Fairtrade Achiever Award, Cymraeg Campus – Siarter Iaith*

**Areas for development to ensure improvement; noting \* against areas to be included in the School Improvement Plan**

Prepare for the end of Headteacher's secondment

- \* Continue to work with Governing Body and LA to improve school facilities and building for increasing pupil numbers.
- \* Address the issue of lack of staffroom.
- \* Embed and develop practices of new staff with appropriate support and training to ensure standards are consistent.